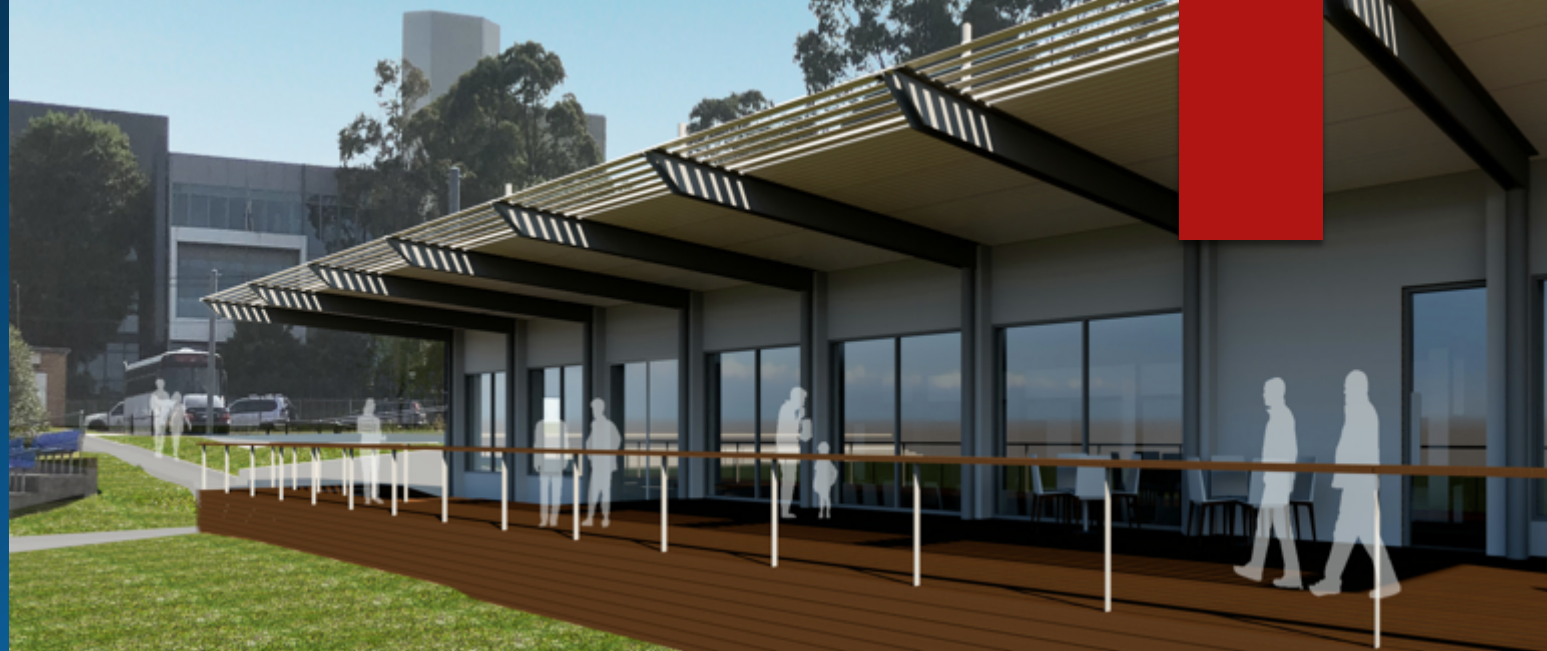


# CROMER PARK HOME OF FOOTBALL

EXPRESSIONS OF INTEREST

BUILDING SERVICES  
EXPERTISE  
FUNDRAISING





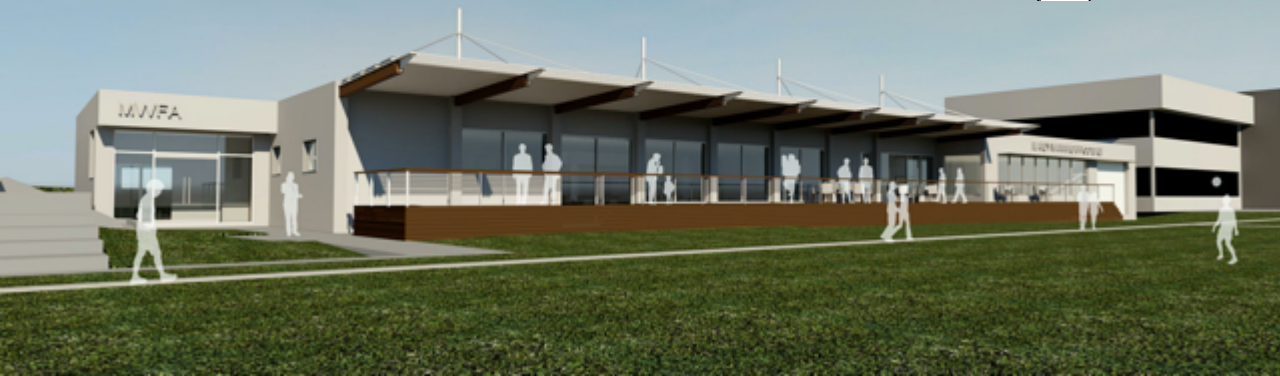
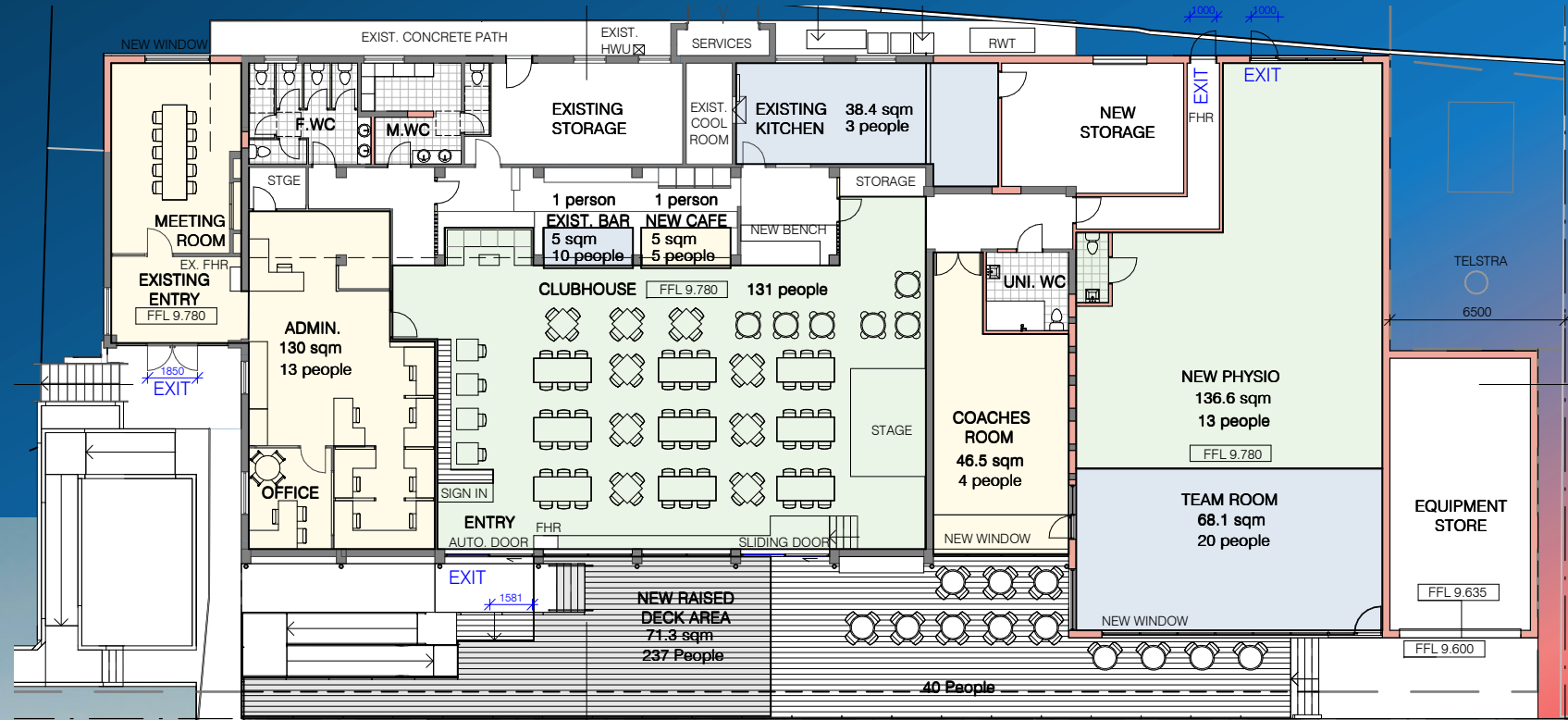
# CROMER PARK – HOME OF FOOTBALL

- MWFA is the Largest football Association in Australia – 18,500 players
- Manly United is a leading NPL Club in NSW with more than 700 players taking part in programs for boys and girls, men and women from U6 through to Men's and Women's Senior teams
- The Manly Warringah District Soccer Football Club (MWDSFC) owns the land and building adjacent to Cromer Park 1. It has not been developed since the 1980s
- ***To realise the full potential of football on the Northern Beaches, the Cromer Park Clubhouse will be developed into the “Home of Football” to bring the quality of the Clubhouse into line with the quality of the Cromer Park facility***
- A joint venture between the MWFA, Manly United and the MWDSFC has been approved and construction will commence on a \$1.8million redevelopment later in 2020.



REDEVELOPMENT OF CROMER PARK CLUBHOUSE

# CROMER PARK – HOME OF FOOTBALL



REDEVELOPMENT OF CROMER PARK CLUBHOUSE



# CROMER PARK – HOME OF FOOTBALL FOOTBALL COMMUNITY INVOLVEMENT

## FOOTBALL COMMUNITY INVOLVEMENT

### 1. BUILDING SERVICES - EXPERTISE

To ensure the Home of Football is a truly football community facility we are asking for any members of the football community who work in the building/construction business, or feel they would be able to assist with the construction and development process, to contact MWFA/Manly United CEO David Mason on 0438 243 195 or ([david.mason@mwfa.com.au](mailto:david.mason@mwfa.com.au)).

All work will be tendered and contracted and must be undertaken by professionals with the appropriate qualifications and insurances under the following criteria:

1. Workmanship and ability to fit into the schedule of work
2. Price
3. Relationship with the football community

***All members of the Football Community assisting with the development will receive permanent recognition of their contribution on the façade of the building.***



# CROMER PARK – HOME OF FOOTBALL

## FOOTBALL COMMUNITY INVOLVEMENT

### FOOTBALL COMMUNITY INVOLVEMENT

## 2. FUNDRAISING

As with the original construction of the building in 1983 and construction of the Lucas Neill stand 2006, MWFA and Manly United are giving football players, coaches, administrators, families, supporters, and community members an opportunity to contribute to the project through four tiers of support.

The four tiers of support packages are:

<b>CAPTAIN</b>	\$25,000 (payable over 3 years)
<b>GOLD</b>	\$10,000 (payable over 3 years)
<b>SILVER</b>	\$5,000 (payable over 2 years)
<b>COMMUNITY</b>	\$1,000

***All members of the Football Community who take out one of the four packages will receive permanent recognition of their contribution on the façade of the building.***

ALSO, Through our partnership with the Australian Sports Foundation, any contributions to the Home of Football project will be tax deductible. A link to the Manly United ASF page can be found here: <https://asf.org.au/projects/manly-united-football-club/>

If you are interested in learning more about these packages and playing a significant role in the future of football on the Northern Beaches, please contact David Mason on 9982 6228 or [David.mason@mwfa.com.au](mailto:David.mason@mwfa.com.au) for more information on the project and how they can be spread over up to three years.