

## VICE PRESIDENT – GIRLS & WOMEN



After adding three new age groups for girls in 2016, the growth in female MiniRoos players continued in 2017. We hope that this growth continues and over time results in more depth in each of our age groups.

A massive thanks to each of the four clubs who hosted the MiniRoos girls' gala days, to MWFRA for providing referees for the matches, Michele Edwards for juggling the draws and arranging all the medallions and trophies and Lee-Anne for coordinating all four gala days. All up, 100 teams played more than 200 matches – a massive effort on the part of all of the above.

Manly Vale hosted the first gala day of the season, with 20 teams of W8 girls having a fabulous day. Not even periodic downpours could wipe the smiles off the faces of the girls or their supporters. 25 teams of W9 girls enjoyed the hospitality of Forest Killarney at Melwood, with some of the girls getting their first taste of playing on an all-weather pitch while their supporters enjoyed the barista's coffee in the sun. Dee Why hosted their first gala day and managed to fit in six fields for the 33 teams of W11 girls and still found room to fire up the popular BBQ. Lastly, Wakehurst had the music pumping for the 22 teams of W10 girls who found the energy to show off their dance moves in between matches.

In a well-supported initiative from Chris Adams, coaching scholarships were awarded to Lyndal Carruthers from Avalon and Cerise Brooks from Mosman. The girls participated in the C-licence course in October and will continue to be mentored by Chris as they take their coaching expertise and experience to the girls within their respective clubs. Chris and Sharon Egger also ran a course for women interested in coaching MiniRoos teams earlier in the year. Hopefully these initiatives will boost the confidence and expertise of females wanting to coach girls and boys.

In the WPL, following on from their exciting and close victory in the MWFA Women's Challenge Cup, Avalon also won the grand final for the main competition, with Manly Vale topping the league. In the WAL1s, Beacon Hill topped the league table and won the final in penalties. At the MWFA Awards Night, the following were recognised for their accomplishments and contributions:

WPL Player of the Year: Anna (Nakao) Winston (Wakehurst), Sarah Moyer (Manly Vale)

WPL Golden Boot: Ayse Adalis (Beacon Hill)

WPL Goalkeeper of the Year: Amy Scott (Beacon Hill) and Nicole Rickard (HSU)

WPL Coach of the Year: Tony Bruzzano and Roland Winter (Manly Vale)

WPL Rookie of the Year: Lucie Crisp (Brookvale)

Women's Clubperson of the Year: Blair McEwan (Avalon)

WAL1 Player of the Year – Madeline Cameron (Manly Vale)

WAL1 Golden Boot: Alexandra Valentin (Beacon Hill)

WAL1 Goalkeeper of the Year: Tayla Carlson (Forest Killarney)

WAL1 Coach of the Year: Ian Bentharn (Mosman)

Once again, MWFA was well-represented in the final rounds of the Champion of Champions competition. We got to watch four of our teams play in the semi-finals held at Cromer: W14 Wakehurst, W16 Avalon, WAL Manly Vale and W35 Wakehurst. The W35 team made it to the finals at Valentine Sports Park which is their second year in a row playing in the finals of what is an over 30s competition. Well done to all four teams as well as their coaches, managers and supporters.

I had pleasure of attending the awards night for Manly United Girls and Women. Sharon Egger and her team have had a stellar year, with so many great reasons to celebrate the 2017 season. I also attended the presentation night for the girls in the SAP program, with the second licence there were even more girls taking advantage of this great program.

We have a celebration of female football coming up in December as we will be hosting a W-League match at Cromer Park. We'll be organising some fun events for MWFA and Manly United girls in the lead-up to what will be an exciting match between Sydney FC and Melbourne Victory.

On behalf of the girls and women of MWFA - thank you to the staff of MWFA! I would especially like to thank Lee-Anne, David, Karon and Angela as well as the EC and MC who have continued to support the growth of the programs for female players within our association.

**Louise Walker**  
**Vice President – Girls**





## MWFA COACH EDUCATION REPORT



As my first year being a part of the Manly Warringah Football Association draws to a close it is with great satisfaction and pleasure that I write this report that details the success that we have seen across coach development in the Manly Warringah Football Community

The Manly Warringah Football Association (MWFA) have 1494 registered coaches with 88% of these coaches being male and 12% being female (FNSW data as of 2/4/2017). This figure ranks the MWFA having the highest amount of registered coaches across NSW (St George Football Association second highest with 1109 coaches). In relation to these figures the MWFA have committed to increasing the amount of female coaches over the next 3 years to 20% and this year we launched the Female Coaching Scholarship. This scholarship sees Lyndal Caruthers (Avalon) and Cerise Brooks (Mosman) receive funding to complete their FFA C

licence in 2017. As part of the scholarship both coaches will also mentor and support female coaches at their respective clubs as well as supporting the successful scholarship winners in 2018.

All of our coaches desire different levels of coach education and support. My goal for coach education across the MWFA is to make education accessible to all coaches. The tendency for many sporting organisations when it comes to coach development is that if you wish to learn you have to come to us. This can often be a barrier to participation in coach education as community coaches, in particular first time coaches, can find courses an intimidating task to complete. There are several reasons for this - fear of the unknown and a lack of confidence in their football knowledge, the fact that the course is at a venue they are unfamiliar with and that they are in an environment where they don't know any peers on the course. Throughout 2017 the MWFA have catered for coaches through several different coach development opportunities as well as the traditional formal coaching courses.

Coaching courses were held across the peninsula, ranging from ALDI MiniRoos coaching courses to the FFA Game Training Certificate. Post course candidates were asked to complete a survey to help the MWFA improve our formal coaching courses and the highlight from the survey was that 88.9% of candidates were very satisfied with their experience on their coaching course. This is a terrific achievement and I must praise my team of instructors Al Ellis, Paul Franks, Richard Lacey and Sharon Egger for their time and effort assisting me with coach education courses in 2017.

In order to make coach education more accessible we introduced the centralised coaching workshops held at Cromer Park every 5 weeks. This year we engaged with over 150 coaches across these workshops. A consistent theme throughout these workshops was to draw on the experiences of the highly qualified Manly United coaching staff throughout Q&A sessions and even facilitating model sessions. Manly United were very accommodating in shifting their youth teams around to enable us to use Cromer 1 and I would like to thank technical director Warren Grieve and his coaches for assisting with this process.



The Club Coach Coordinator (CCC) program was launched this year across the MWFA. The CCC program is a Football Federation Australia coach development program aimed at supporting new and inexperienced coaches in their own club environment. The program has come to life across the peninsula with the 8 member clubs involved in the pilot program. The CCC program is designed to help those new and inexperienced coaches via inter club development opportunities. The program isn't a one size fits all program and all of the member clubs have supported their coaches in different ways be it through one to one mentoring from an experienced coach, or through the several inter club workshops run in conjunction with myself and the MWFA. The highlight of the year with the CCC program was the visit of Les Bee from Football Federation Australia. Les is the National Community Coach Development Manager and is the architect behind the CCC program. Les came to Cromer Park to help facilitate the end of year program review and alongside myself we helped the respective MWFA clubs to develop their own CCC action plan for 2018 which I will help them bring to life next season. Moving into 2018 and beyond I can see the CCC program expanding into more of our member clubs as they see the benefits it has had on our current CCC clubs.

The year will finish off with the FFA/AFC C licence coaching course at Cromer Park in October where 40 coaches will gain their C Licence accreditation. Once this course is completed I will be a qualified C Licence instructor and the plan for 2018 and beyond is to have myself run the C Licence coaching course here in Manly and then Warren Grieve (MUFC TD) run the AFC/FFA B Licence course here at Cromer Park. The 2017 C licence course will be the seventh course run by the Manly Warringah and the next step for us as an association is to offer the B Licence to our respective MWFA coaches.

Overall 2017 has been a very successful year for coach development across the peninsula and the challenge now is to keep increasing the standard of our coach development opportunities and to make them as flexible and accessible to as many coaches as possible.

I would like to take this opportunity to thank every member of the football community that has made my transition from Western Australia to New South Wales a smooth one From club members to my colleagues in the office at Cromer Park, the relationships that I have formed with you all in 2017 have turned into friendships and I look forward to developing them further in 2018. Finally thank you also to the MWFA executive committee for offering me the opportunity to work for this wonderful organisation.

See you all in 2018.

**Chris Adams**  
**Community Coach Development Manager**





## MANLY UNITED FC – TECHNICAL DIRECTOR MENS FOOTBALL

The 2017 Season has been one to remember. The overall Manly United Football Club experience has been exceptional. From the first steps of the Development Program, through the improvement of players in the Skill Acquisition Program and Youth League all the way through to the Grand Final victory for the Men's and Women's first grade sides, it has been a privilege and an honour to be a part of the success enjoyed by Manly United across the board. Manly United aims to provide the best player development and coach development pathway in the Country and our players, coaches, player welfare staff, convenors, managers, parents, volunteers, and sponsors have all played a huge part in the overall success. The Manly Warringah Football Association are a key component to making the Manly United club the well-respected program that it is across NSW and I would like to take this opportunity to thank everyone involved for helping us to establish a relationship that is the envy of representative programs across the country.

We can all proudly claim that our program is a bench mark.

When all Technical programs started in November last year we wanted to ensure that all stakeholders were aware of our holistic approach. In December 2017 we released the Manly United Football Plan, a plan for the whole club from Under 9's Development Squad through to First Grade. The aim of the plan was to give everybody involved in the club a clear understanding of how we would deliver a high performance pathway.

As part of the FFA Whole of Football Plan we have an obligation to provide our most talented players on the Northern Beaches an opportunity to develop and grow to understand the values of bettering themselves as individuals and also understand what it means to be a part of a team. We aim to provide the most professional football environment where everyone involved not only enjoys their experience but develops as people and players through a growth mindset approach to learning.

Each of our programs are specifically designed to ensure every player regardless of age is not only exposed to the best training and match day environment but also enjoys the experience. Every year for the individual player is a stepping stone to representing the club as a first grade player with some of them hopefully going on to the next level of playing in the Hyundai A-League or representing their Country.

To bring our football plan to life requires a lot of dedicated help and there are many people that have done that this year. We are very fortunate to have an outstanding coaching staff and their efforts we must acknowledge, they have worked tirelessly and with our fantastic team managers who have once again ensured a smooth operation.

We have without doubt the best player welfare team I have ever been exposed to and I am very grateful and fortunate to work alongside Steve Felsher. His dedication and professionalism is a huge asset to the club and we can't thank you enough.



## 2017 Highlights:

### Skill Acquisition Program:

This year saw the introduction of a second licence which ensured that more of our talented young players were exposed to a full time training environment. The 2017 program catered for a total of 170 players between the ages of 9 to 12. It has been a pleasure to watch these young players hone their skills individually and it was incredibly evident to see their progress when we had a group of teams attend the Kanga Cup in Canberra, the biggest festival of football on the Southern Hemisphere. Not only was the football played exceptional to watch we also witnessed the Under 9's, Under 10's, and Under 11's all take out the Championship for 2017. A truly magnificent effort for everyone involved.

### Boys Youth League Program:

The players aged 13-16 are required to take the next step in their football development and apply their individual skill to the team setting; meaning these four years of development test the players technically, tactically, physically, and mentally. Establishing a proactive brand of football, "the Manly way of playing", saw each side play with no fear of failure. Where results are not the be all and end all, success became a by-product of the overall vision and philosophy of the club. To watch our under 13's transition out of the Skill Acquisition Phase into the Game Training Phase was a real pleasure. Individually, players adapted which saw the team grow and eventually dominate teams in possession. In their last year of Boys Youth League the Under 16's not only played an exceptional brand of football but were very unlucky to not finish top of the ladder after missing on the last day of the season.

As part of any players development, the chance to test yourself against international opposition is always an opportunity to relish. A mixture of our 15's and 16's were invited to participate in the "The 12th Chairman of Korea Football League & Governor of Gyeongsangbukdo Cup International Football Tournament". This prestigious Tournament is how the Korean Football League select their youth National teams. 18 of our talented boys made their way to Korea and once again demonstrated a competitive proactive brand of football, which saw them eventually get knocked out narrowly 2-1 in the quarterfinals to the Korean National team, a huge collective effort and achievement.

### Mens Senior Program:

The step up from Boys Youth League to the senior program can be somewhat challenging. Our U18's, many of which were still age eligible for U16's, stepped up to the mark and embraced flexibility, adapting to a new formation that saw the team finish in the top five and get the chance to play finals football. For the first grade team it was about building on what had been an incredibly successful 2016 where they finished third. Having retained the majority of the playing group and added a few new faces, 2017 was always promising.

The unfortunate news that Paul Dee had to relocate interstate was a minor blow so deep into preseason. The group rallied to sit top of the league early on. After a midway hiccup, which saw the team ravaged by injury, they collectively regrouped and went on a run, winning eight of their last nine games to ensure they would play finals football. Finishing fourth meant doing it the hard way and that they did beating Sydney Olympic and then Blacktown FC. Next up was Rockdale and a win on penalties sent the team – and the Manly United Club – into Grand Final for the first time in 22 years.



It was an absolute pleasure to watch a team grow collectively. One of the highlights from the grand final was seeing so many supporters travel to Leichhardt Oval from the Manly Warringah area. There were people from Manly United and all of the local MWFA grassroots clubs and highlighted the support that grew week by week and it really was a key factor in making Cromer Park a fortress for opposing teams.

To go on and win the final has inspired a football community and football on the Northern Beaches will continue to grow.

We have to continue to build and our challenge now is to be the best youth development and coach development program in the Country.

**Warren Grieve**  
**Manly United Technical Director**

## **MANLY UNITED FC – TECHNICAL DIRECTOR WOMENS FOOTBALL**

2017 saw the Manly United FC women's program field teams in the FNSW NPL Competition in grades 13,15,17, Reserve Grade and First Grade.

Four of five grades made the finals being our 13s (finished 3<sup>rd</sup>), 15s (finished 4<sup>th</sup>), 17s (finished 4<sup>th</sup>) and First Grade (finished 2<sup>nd</sup>). Both the 17s and First Grade made the Grand Final with our First Grade being victorious, beating Macarthur Rams 4-3.

Our Grand Final win was special, not only because it was the first time in many years First Grade had been there, but how much it meant to so many in the club. As the Macarthur Captain said in her speech, "the supporters were fantastic – even if 3/4s of them were from Manly United."

The club finished second on the club championship – a mammoth effort, considering our relatively slow start to the season, losing our first grade coach which meant a re-shuffle for others. This is a measure of the club's structure and the resilience of our coaching staff and players that enabled us to not only handle the staffing change, but motivate us to excel, and that we did.

Our youth development programs, playing style, fair play, integrity and facilities are second to none, along with highly qualified, experienced and dedicated coaching staff, which is why we are often referred to as the 'model' women's youth development program in NSW.

Once again I consider myself fortunate to have held the position of Technical Director of the women's program at Manly United FC this year. Our players are a delight to work with from the SAP program right through to First Grade.

Most of them have learnt their trade at MUFC, many from as young as 11 and some even younger, with 12 of the 16 players in our First Grade Grand Final team being Manly juniors.

This year saw the introduction of the U13/First Grade 'buddy' program. It was a great success, not only giving the younger girls a connection to the senior area, but also added to our club culture, especially on game day when most of the 13s would stay at Cromer all day and watch the First Grade girls play. A number of combined social BBQ's were held, culminating in a post-season combined training session.

I know I speak for our coaching staff when I say that we are very fortunate to be charged with the responsibility of developing the best of the best on the peninsula and every year we work harder to do just that, whilst ensuring we have a balanced, nurturing environment where enjoyment and development is paramount, particularly in the youth grades. Believing in what we do, not veering from the script and working together as a unit is why we are at the top of the women's game in NSW.

This year saw the 4th year of our Girls SAP (Skill Acquisition Program) and our first year of the full-time program. Such is our depth at MUFC, we had 2 x licenses and so, 4 teams. The program has been a wonderful success, which is demonstrated by the number of Manly United players who were selected in the Sydney North PSSA team.

We have a commitment to developing home grown juniors so that our senior squad continues to draw from our youth grades both in the short term and in the future and the Girls SAP is certainly providing the best platform for this to continue.

This year we continued the girls GK Development Squad which was conducted by ex-Matilda Vicki Cerny. The girls loved it and as a result, we will be continuing this in 2018.

Once again our TRY SAP Day was a great success, attracting over 80 girls to Cromer Park during the season. All our coaching staff were on deck along with a number of players from all grades, contributing to ensure the day ran like clockwork.

As I write this, we have now had 8 First Grade players sign W-League contracts for the coming season. Add to that, we currently have 3 players in the final training camp with the Young Matildas and the squad to travel to China is being announced this coming weekend. We are in the business of developing elite footballers for Manly United and beyond, whether that be the W-League or National Teams and I am proud to say we are on track.

**Sharon Egger**  
**Manly United Technical Director**

## MANLY UNITED FC – COMMUNITY FOOTBALL REPORT

In 2017 we saw the Manly United Community programs continue to grow. The three pillars that make up the community arm of the MUFC program

### Grassroots Club Academies

We were delighted that in 2017 we were able to partner with 3 local clubs to deliver the MUFC Academy sessions. Throughout terms 1, 2 and 3 in blocks of 8 weeks, Manly United coaches would conduct 60 minute sessions across several time slots to grassroots players. We continued our partnership with Pittwater RSL Football Club and as mentioned, we were thrilled to be able to engage with Wakehurst FC and Belrose-Terrey Hills FC to deliver similar programming. The turn-out for these was fantastic which just continues to demonstrate the appetite for football on the Northern Beaches is strong.

### School Holiday Camps

2017 saw our biggest camps in 2 years with more than 320 players experience our school holiday experience during the July break. A more skills focussed environment and a continued engagement with the grassroots clubs saw played a massive role in the success of these camps. Our September school holiday camps saw similar successes with over 200 players, a big turn-out for off season camps.

### After School Soccer

Throughout the school year we continued to partner with local primary schools on the Northern Beaches to deliver our After School Soccer program. A big thanks to our partners in Kambora P.S, Narrabeen Lakes P.S, Balgowlah North P.S, Belrose P.S, Mimosa P.S and Forestville P.S for their continued support of Manly United FC and the programs we offer. In 2018 we hope to continue to grow this program and develop strong ties with more of the primary schools on the peninsula.

## MWFA SKILLS ACQUISITION PROGRAM - GIRLS

2017 saw the introduction of the full-time Girl's Skill Acquisition Program.

Building on Manly United FC's already successful part-time program and underpinning development squads, it was decided that we would enter 2 licences. This made Manly United & Manly Warringah the only club/association to have dual licences, thereby doubling the opportunities available to girls U10 and U12 residing in the Manly Warringah boundaries to play at the elite level. This alone was a testament to the extraordinary depth of talent and dedication to the growth of women's football on the Northern Beaches.

The coaching staff worked together in preseason to plan and prepare a 40 week program for the players. It was agreed that the content and session designs being reassessed every 6 weeks ensuring a constant review of our process to ensure we are always striving to create the best environment for the players. With the implementation of the full time program, we also added an additional third training session for the week bringing the total to 120 sessions. A step up for a lot of the players and coaching staff, it was clear the benefits of the lengthened program. The abilities of the players continued to develop in the team context and the players started to understand the ideas behind playing in a team as well as continuing their individual development.

All four teams across the two licences enjoyed incredibly successful only losing a combined 4 games and scoring an absolute surfeit of goals.

In season 2018 with the competition structure changes and the introduction of the U11 and U13 age groups, the girl's SAP program will revert to one licence. The strength of the program in 2017 will ensure a seamless transition into the 4 age group full time program next year.



I would like to thank all the coaching staff for their continued hard work through the season, the game day managers Simon Franklin and Justin Rainbird, parents of the players for their commitment to the cause to allow their daughters the chance to play at the elite level and to the Technical Director Sharon Egger for her continuing hard work to drive women's football in the Northern Beaches and beyond.

**Jordan Lefebvre**  
Community Development Officer



## MWFA SKILLS ACQUISITION PROGRAM - BOYS

The 2017 Skill Acquisition Program has now officially drawn to a close. This season built upon the structural changes that I helped first implement in 2016 and has been further improved by the addition of Warren's expertise and experiences.

The 2017 season was a success for many reasons. Most people involved with the 2017 SAP program are quick to point out result-based examples such as, the successes some of our teams achieved in Canberra at the Kanga Cup or successes at gala days. However for myself, 2017 was a success due to the following reason: learning (and hence individual improvement) was achieved in an environment that made learning possible. Players continued to develop the 4 core main skills in 2017 but the best thing about our program is that the learning doesn't stop there. Our players have developed and continue to develop further aspects of their game, such as 1v1 defending. Non-football specific skills like communication, interpersonal and resilience skills (to name a few) I see develop and grow in the players each week, session after session.

The teaching culture within Manly United FC Skill Acquisition Program could not have been represented better than with the current coaching staff. Warren and I could not be more proud of the way they have conducted themselves. They are great coaches and great people, which is why I believe their teaching messages resonated with the players so well. So to the coaches, I say a huge thank you! You are such a critical piece of the Manly United FC Skill Acquisition jig-saw.

I would also like to say a big thank you to the team managers for the momentous effort organising their respective teams they have put in this season.

Warren and I would like to personally thank you for your outstanding communication skills between parents and coaching staff.

I would also like to single out and thank Rozz Switzer, this year's Program Coordinator. Rozz's in her second year in this position has been momentous. So again, I would like to thank Rozz for her constant professional attitude and manner to ensure our program is represented in the best way possible.

On behalf of your children, I would like to thank you, the parents. The players may not understand yet the level of commitment required but I do know they appreciate your support and for always being there for them. To anyone who has contributed to the program in the slightest way, from setting up or packing away fields, to helping in the canteen, refereeing games or even playing taxi, I sincerely thank you for your contribution to this season's program.

The "stars" of the show, the players. A big thank you goes to you. The players are the reason we are all here at this presentation and the reason we do what we do. Without the player's relentless work ethic, hunger and attitude, the development and overall improvement that we have all witnessed and enjoyed throughout the season would not have been achieved. These players embody the necessary traits to be a Boys or Girls Youth League player at Manly United FC. They are a special bunch of kids.



A huge thank you to all the staff who are involved at Manly United FC.

To the members of the board, the admin ladies (Lee-Anne, Angela and Karon) and Dave Mason, thank you for such an incredible and supportive working environment.

Lastly, I would like to thank Warren Grieve, our Technical Director, for an incredible opportunity and a great working relationship. I have learnt a lot from you this season and hope that we can continue to grow this program to become one of the nation's most envied Skill Acquisition Programs in Australia.

**Dusan Mihajlovic**  
**MWFA SAP Head Coach**

## MWFA COMPARISON TO OTHER ASSOCIATIONS

The table below shows figures taken from the 2016 FNSW Year Book giving a comparison of various player statistics over thirty four FNSW Associations. "State League FNSW" includes all clubs who play in FNSW State League Competitions.

In summary within FNSW Associations the MWFA is:

- Second largest in total number of players
- Fifth largest in number of male players
- Second largest in number of female players

| ASSOCIATION                  | TOTAL PLAYERS |               | MALE PLAYERS  |               | FEMALE PLAYERS |               |               | CLUBS      |
|------------------------------|---------------|---------------|---------------|---------------|----------------|---------------|---------------|------------|
|                              | No.           | % change 2015 | No.           | % change 2015 | No.            | % change 2015 | % Assn total  | No         |
| Sutherland Shire FA          | 18784         | 0.68%         | 13037         | 0.05%         | 5747           | 2.15%         | 30.60%        | 26         |
| <b>Manly Warringah</b>       | <b>17345</b>  | <b>1.11%</b>  | <b>12665</b>  | <b>0.17%</b>  | <b>4680</b>    | <b>3.77%</b>  | <b>26.98%</b> | <b>18</b>  |
| Northern Suburbs             | 16547         | 1.93%         | 12777         | -0.03%        | 3770           | 9.21%         | 22.78%        | 32         |
| Canterbury & District        | 16242         | 3.49%         | 12696         | 2.73%         | 3546           | 6.33%         | 21.83%        | 24         |
| Central Coast                | 13771         | -0.21%        | 10999         | -0.04%        | 2772           | -0.89%        | 20.13%        | 24         |
| Gladesville Hornsby          | 13448         | -4.34%        | 12968         | -4.32%        | 480            | -4.95%        | 3.57%         | 32         |
| Nepean                       | 12670         | 0.36%         | 10110         | 0.11%         | 2560           | 1.35%         | 20.21%        | 32         |
| Football South Coast         | 11734         | -1.39%        | 8996          | -1.72%        | 2738           | -0.33%        | 23.33%        | 64         |
| State League FNSW            | 11020         | 16.34%        | 8823          | 20.16%        | 2197           | 3.19%         | 19.94%        | 67         |
| Granville & District         | 10263         | -35.02%       | 8566          | -35.55%       | 1697           | -32.17%       | 16.54%        | 28         |
| Blacktown                    | 10210         | 0.10%         | 8372          | -0.57%        | 1838           | 3.26%         | 18.00%        | 23         |
| Macarthur                    | 9756          | 3.41%         | 7961          | 3.00%         | 1795           | 5.28%         | 18.40%        | 25         |
| St George                    | 8907          | -4.70%        | 7250          | -6.22%        | 1657           | 2.60%         | 18.60%        | 24         |
| Eastern Suburbs              | 8776          | 10.09%        | 6699          | 10.67%        | 2077           | 8.23%         | 23.67%        | 25         |
| Southern Districts           | 8431          | -4.55%        | 7277          | -5.33%        | 1154           | 0.70%         | 13.69%        | 37         |
| Bankstown District           | 6511          | -4.38%        | 5475          | -4.15%        | 1036           | -5.56%        | 15.91%        | 21         |
| Shoalhaven District          | 3400          | -1.95%        | 2403          | 2.74%         | 997            | 0.10%         | 29.32%        | 13         |
| NW Sydney Women's            | 2906          | 0.87%         |               |               | 2906           | 0.87%         | 100.00%       | 27         |
| Wagga Wagga & District       | 2448          | 10.02%        | 1826          | 6.66%         | 622            | 21.25%        | 25.41%        | 11         |
| Dubbo & District             | 2285          | -4.07%        | 1738          | -2.91%        | 547            | -7.60%        | 23.94%        | 16         |
| Orange & District            | 2216          | -2.34%        | 1880          | -3.98%        | 336            | 8.04%         | 15.16%        | 17         |
| Lachlan Amateur              | 2058          | 2.08%         | 1362          | 3.97%         | 696            | -1.42%        | 33.82%        | 13         |
| Bathurst & District          | 1982          | 2.38%         | 1447          | 3.58%         | 535            | -0.74%        | 26.99%        | 19         |
| Highlands                    | 1679          | -0.59%        | 1264          | 0.64%         | 415            | -4.16%        | 24.72%        | 12         |
| Griffith & District          | 1630          | -2.28%        | 1271          | -4.15%        | 359            | 4.97%         | 22.02%        | 7          |
| Albury Wodonga               | 1403          | 0.29%         | 1011          | 2.54%         | 392            | -5.08%        | 27.94%        | 6          |
| Far South Coast              | 1172          | 18.50%        | 787           | 17.64%        | 385            | 20.31%        | 32.85%        | 8          |
| Lithgow & District           | 1133          | -3.90%        | 866           | 0.58%         | 267            | -16.04%       | 23.57%        | 3          |
| Southern Tablelands          | 929           | 5.57%         | 684           | -1.01%        | 245            | 29.63%        | 26.37%        | 8          |
| Eurobodalla                  | 868           | 1.17%         | 587           | 0.51%         | 281            | 2.55%         | 32.37%        | 6          |
| Western Plains               | 649           | 31.91%        | 416           | 20.58%        | 233            | 58.50%        | 35.90%        | 7          |
| South West Slopes            | 646           | 5.90%         | 420           | 5.26%         | 226            | 7.11%         | 34.98%        | 5          |
| Sydney Amateur League        | 520           | -8.29%        | 520           | -8.29%        |                |               |               | 21         |
| Aust. Chinese Soccer         | 273           | -8.08%        | 273           | -8.08%        |                |               |               | 15         |
| <b>Total Players in FNSW</b> | <b>222612</b> | <b>-1.35%</b> | <b>173426</b> | <b>-2.06%</b> | <b>49186</b>   | <b>1.26%</b>  | <b>22.09%</b> | <b>716</b> |

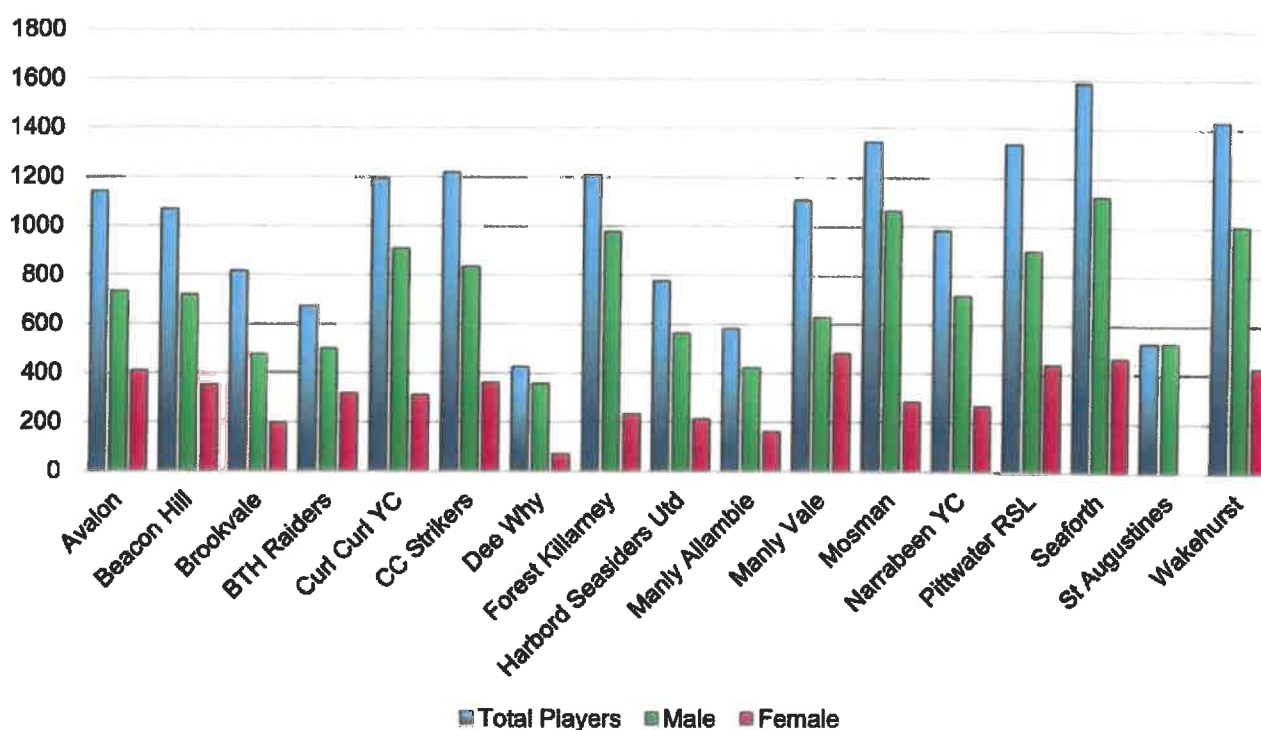
Note: Manly Warringah Club total includes MWFA Masters Winter Competition

## REGISTRARS' REPORT

### Total players per club

| Club                 | Total Players | Male         | % M        | Female      | % F        |
|----------------------|---------------|--------------|------------|-------------|------------|
| Avalon               | 1139          | 731          | 64%        | 408         | 36%        |
| Beacon Hill          | 1065          | 716          | 67%        | 349         | 33%        |
| Brookvale            | 814           | 475          | 71%        | 195         | 29%        |
| BTH Raiders          | 670           | 498          | 61%        | 316         | 39%        |
| Curl Curl YC         | 1192          | 906          | 75%        | 310         | 25%        |
| CC Strikers          | 1216          | 832          | 70%        | 360         | 30%        |
| Dee Why              | 425           | 356          | 84%        | 69          | 16%        |
| Forest Killarney     | 1206          | 974          | 81%        | 232         | 19%        |
| Harbord Seaside Utd  | 775           | 562          | 73%        | 213         | 27%        |
| Manly Allambie       | 581           | 421          | 72%        | 160         | 28%        |
| Manly Vale           | 1104          | 625          | 57%        | 479         | 43%        |
| Mosman               | 1341          | 1058         | 79%        | 283         | 21%        |
| Narrabeen YC         | 981           | 715          | 73%        | 266         | 27%        |
| Pittwater RSL        | 1335          | 898          | 67%        | 437         | 33%        |
| Seaforth             | 1586          | 1121         | 71%        | 465         | 29%        |
| St Augustines        | 525           | 525          | 100%       |             |            |
| Wakehurst            | 1428          | 1002         | 70%        | 426         | 30%        |
| <b>Total Players</b> | <b>17383</b>  | <b>12415</b> | <b>71%</b> | <b>4968</b> | <b>29%</b> |

### Total Players per Club 2017



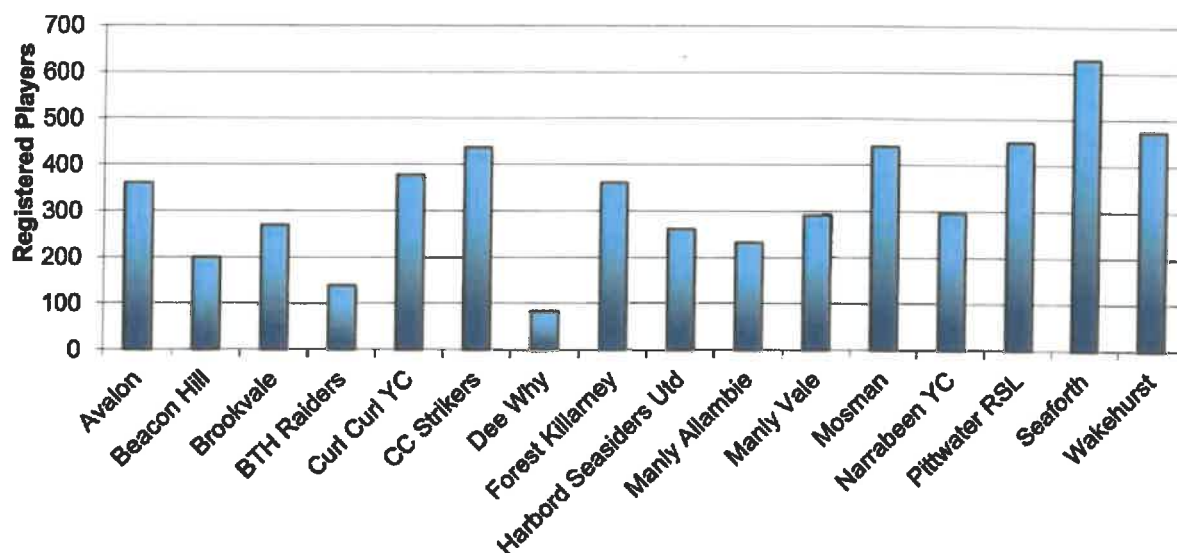


## REGISTRARS' REPORT

### Juniors – U6 to U9

| Club                 | U6          |            | U7          |            | U8          |            | W-U8       |           | U9          |            | W-U9       |           | Totals      |            |
|----------------------|-------------|------------|-------------|------------|-------------|------------|------------|-----------|-------------|------------|------------|-----------|-------------|------------|
|                      | P           | T          | P           | T          | P           | T          | P          | T         | P           | T          | P          | T         | P           | T          |
| Avalon               | 92          | 8          | 98          | 8          | 82          | 8          | 20         | 2         | 58          | 6          | 10         | 1         | 360         | 33         |
| Beacon Hill          | 25          | 2          | 72          | 6          | 62          | 6          |            |           | 31          | 3          | 9          | 1         | 199         | 18         |
| Brookvale            | 48          | 4          | 80          | 7          | 61          | 6          |            |           | 60          | 6          | 20         | 2         | 269         | 25         |
| BTH Raiders          | 35          | 3          | 35          | 3          | 41          | 4          |            |           | 19          | 2          | 8          | 1         | 138         | 13         |
| Curl Curl YC         | 87          | 8          | 92          | 8          | 73          | 8          | 19         | 2         | 77          | 8          | 29         | 3         | 377         | 38         |
| CC Strikers          | 132         | 13         | 100         | 10         | 91          | 10         | 19         | 2         | 85          | 9          | 10         | 1         | 437         | 45         |
| Dee Why              | 12          | 1          | 21          | 2          | 29          | 3          |            |           | 20          | 2          |            |           | 82          | 8          |
| Forest Killarney     | 88          | 7          | 81          | 7          | 83          | 8          |            |           | 99          | 10         | 10         | 1         | 361         | 33         |
| Harbord Seaside Utd  | 48          | 4          | 61          | 5          | 57          | 6          | 21         | 2         | 66          | 7          | 8          | 1         | 261         | 25         |
| Manly Allamby        | 62          | 5          | 45          | 4          | 32          | 3          | 31         | 3         | 32          | 3          | 30         | 3         | 232         | 21         |
| Manly Vale           | 96          | 8          | 46          | 4          | 61          | 6          | 10         | 1         | 53          | 6          | 25         | 3         | 291         | 28         |
| Mosman               | 117         | 10         | 93          | 8          | 106         | 11         | 31         | 3         | 73          | 8          | 20         | 2         | 440         | 42         |
| Narrabeen YC         | 47          | 4          | 84          | 7          | 51          | 5          | 10         | 1         | 67          | 7          | 37         | 4         | 296         | 28         |
| Pittwater RSL        | 84          | 7          | 112         | 9          | 94          | 9          | 21         | 2         | 89          | 9          | 49         | 5         | 449         | 41         |
| Seaforth             | 162         | 13         | 156         | 13         | 113         | 11         | 60         | 6         | 107         | 11         | 30         | 3         | 628         | 57         |
| Wakehurst            | 111         | 9          | 155         | 13         | 127         | 13         |            |           | 80          | 8          |            |           | 473         | 43         |
| <b>Total Players</b> | <b>1246</b> |            | <b>1331</b> |            | <b>1163</b> |            | <b>242</b> |           | <b>1016</b> |            | <b>295</b> |           | <b>5293</b> |            |
| <b>Total Teams</b>   |             | <b>106</b> |             | <b>114</b> |             | <b>117</b> |            | <b>24</b> |             | <b>105</b> |            | <b>31</b> |             | <b>497</b> |

**Total number of Junior Players (U6-U9)  
registered per club in 2017**

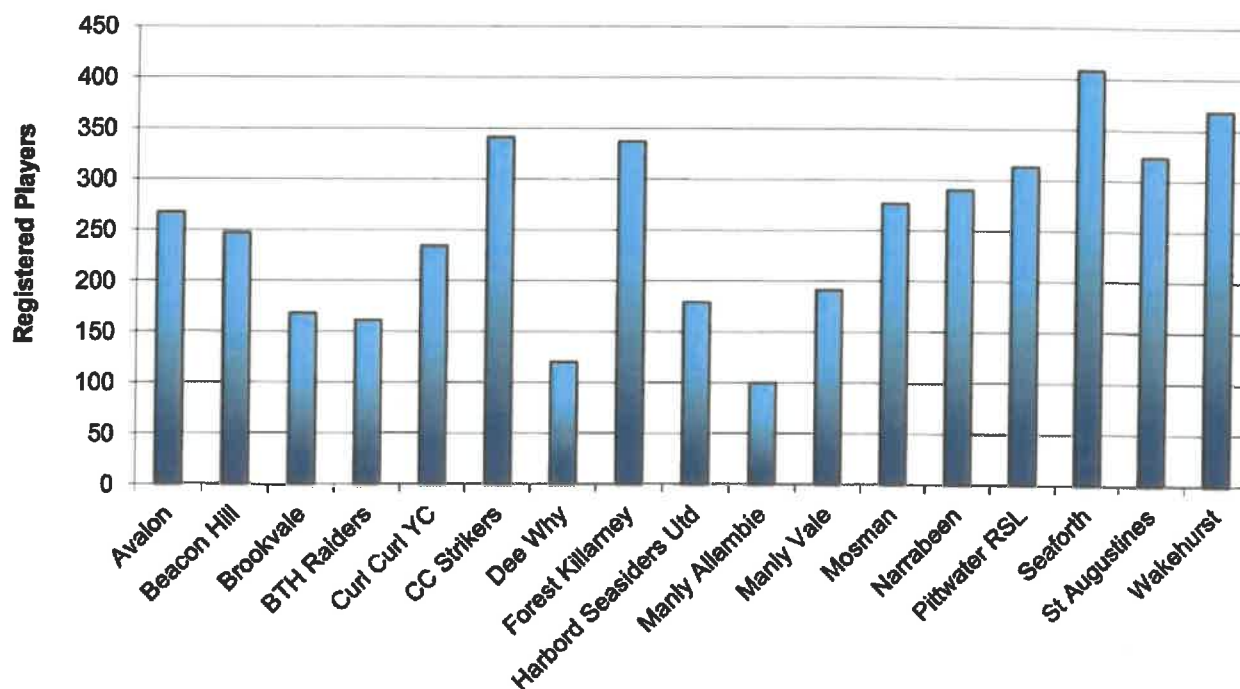


## REGISTRARS' REPORT

### Youth – U10 to U16

| Club                 | U10        |           | U11        |           | U12        |           | U13        |           | U14        |           | U15        |           | U16        |           | Total       |            |
|----------------------|------------|-----------|------------|-----------|------------|-----------|------------|-----------|------------|-----------|------------|-----------|------------|-----------|-------------|------------|
|                      | P          | T         | P          | T         | P          | T         | P          | T         | P          | T         | P          | T         | P          | T         | P           | T          |
| Avalon               | 65         | 6         | 50         | 5         | 46         | 3         | 33         | 2         | 30         | 2         | 26         | 2         | 17         | 1         | 267         | 21         |
| Beacon Hill          | 57         | 5         | 44         | 4         | 44         | 3         | 14         | 1         | 55         | 4         | 17         | 1         | 16         | 1         | 247         | 19         |
| Brookvale            | 48         | 4         | 24         | 2         | 32         | 2         | 14         | 1         | 32         | 2         | 18         | 1         |            |           | 168         | 12         |
| BTH Raiders          | 31         | 3         | 37         | 3         | 27         | 2         | 26         | 2         | 13         | 1         | 13         | 1         | 14         | 1         | 161         | 13         |
| Curl Curl YC         | 61         | 5         | 58         | 5         | 14         | 1         | 43         | 3         |            |           | 29         | 2         | 29         | 2         | 234         | 18         |
| CC Strikers          | 59         | 5         | 70         | 6         | 52         | 4         | 43         | 3         | 44         | 3         | 43         | 3         | 30         | 2         | 341         | 26         |
| Dee Why              | 20         | 2         | 12         | 1         | 31         | 2         | 14         | 1         | 15         | 1         |            |           | 28         | 2         | 120         | 9          |
| Forest Killarney     | 71         | 7         | 50         | 4         | 63         | 4         | 46         | 3         | 61         | 4         |            |           | 46         | 3         | 337         | 25         |
| Harbord Seaside Utd  | 31         | 3         | 48         | 4         | 30         | 2         | 27         | 2         | 13         | 1         | 16         | 1         | 14         | 1         | 179         | 14         |
| Manly Allambie       | 24         | 2         | 45         | 4         | 15         | 1         | 16         | 1         |            |           |            |           |            |           | 100         | 8          |
| Manly Vale           | 55         | 5         | 35         | 3         | 30         | 2         | 28         | 2         |            |           | 43         | 3         |            |           | 191         | 15         |
| Mosman               | 76         | 7         | 61         | 5         | 45         | 3         | 15         | 1         | 33         | 2         | 32         | 2         | 14         | 1         | 276         | 21         |
| Narrabeen            | 46         | 4         | 59         | 5         | 54         | 4         | 54         | 4         | 32         | 2         | 14         | 1         | 31         | 2         | 290         | 22         |
| Pittwater RSL        | 71         | 6         | 44         | 4         | 63         | 4         | 16         | 1         | 46         | 3         | 42         | 3         | 31         | 2         | 313         | 23         |
| Seaforth             | 100        | 8         | 106        | 9         | 57         | 4         | 41         | 3         | 26         | 2         | 32         | 2         | 46         | 3         | 408         | 31         |
| St Augustines        |            |           | 24         | 2         | 28         | 2         | 59         | 4         | 75         | 5         | 64         | 4         | 73         | 5         | 323         | 22         |
| Wakehurst            | 70         | 6         | 61         | 5         | 44         | 3         | 61         | 4         | 41         | 3         | 43         | 3         | 48         | 3         | 368         | 27         |
| <b>Total Players</b> | <b>885</b> |           | <b>828</b> |           | <b>675</b> |           | <b>550</b> |           | <b>516</b> |           | <b>432</b> |           | <b>437</b> |           | <b>4323</b> |            |
| <b>Total Teams</b>   |            | <b>78</b> |            | <b>71</b> |            | <b>46</b> |            | <b>38</b> |            | <b>35</b> |            | <b>29</b> |            | <b>29</b> |             | <b>326</b> |

**Total number of Junior & Youth Players (U10-U16)  
registered per club in 2017**

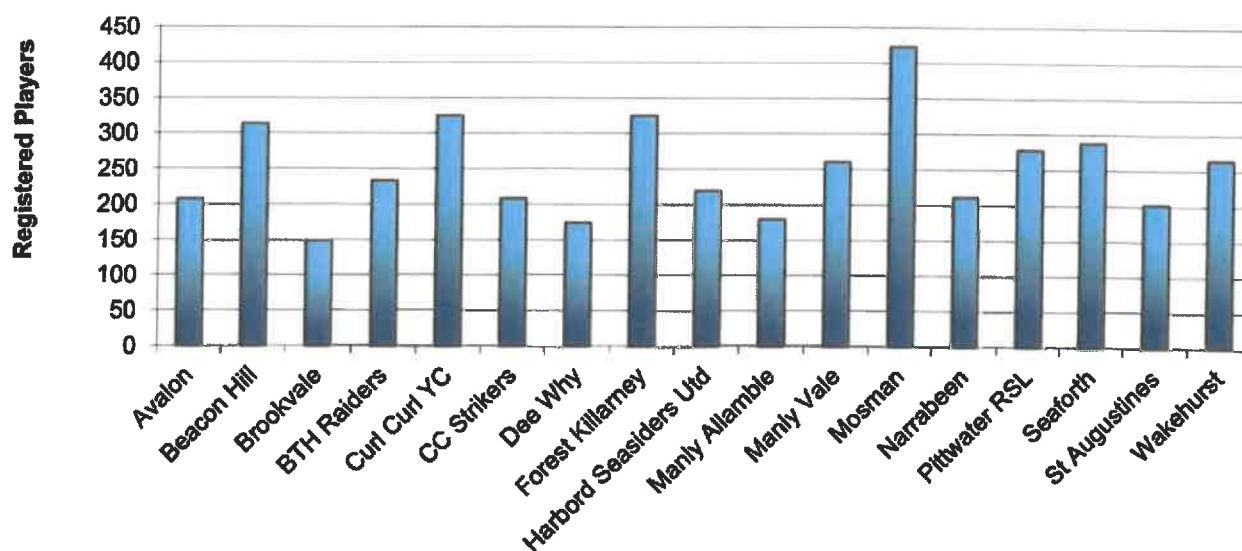


# REGISTRARS' REPORT

## Senior Men

| Club                 | U18        |           | U21      |          | AL          |           | O35         |           | O45        |           | PL         |           | Total       |            |
|----------------------|------------|-----------|----------|----------|-------------|-----------|-------------|-----------|------------|-----------|------------|-----------|-------------|------------|
|                      | P          | T         | P        | T        | P           | T         | P           | T         | P          | T         | P          | T         | P           | T          |
| Avalon               | 35         | 2         |          |          | 71          | 4         | 60          | 4         | 41         | 2         |            |           | 207         | 12         |
| Beacon Hill          | 48         | 3         |          |          | 104         | 6         | 86          | 5         | 75         | 4         |            |           | 313         | 18         |
| Brookvale            | 17         | 1         |          |          | 47          | 3         | 46          | 2         |            |           | 38         | 2         | 148         | 8          |
| BTH Raiders          | 16         | 1         |          |          | 131         | 7         | 49          | 3         | 37         | 2         |            |           | 233         | 13         |
| Curl Curl YC         | 31         | 2         |          |          | 143         | 8         | 133         | 7         | 18         | 1         |            |           | 325         | 18         |
| CC Strikers          | 17         | 1         |          |          | 51          | 3         | 108         | 6         |            |           | 32         | 2         | 208         | 12         |
| Dee Why              | 17         | 1         |          |          | 104         | 6         | 21          | 1         |            |           | 32         | 2         | 174         | 10         |
| Forest Killarney     | 63         | 4         |          |          | 135         | 7         | 86          | 4         | 41         | 2         |            |           | 325         | 17         |
| Harbord Seaside Utd  | 28         | 2         |          |          | 133         | 8         | 36          | 2         | 22         | 1         |            |           | 219         | 13         |
| Manly Allambie       | 32         | 2         |          |          | 55          | 3         | 53          | 3         | 39         | 2         |            |           | 179         | 10         |
| Manly Vale           | 28         | 2         |          |          | 85          | 5         | 91          | 5         | 19         | 1         | 37         | 2         | 260         | 15         |
| Mosman               | 37         | 2         |          |          | 183         | 10        | 150         | 7         | 20         | 1         | 33         | 2         | 423         | 22         |
| Narrabeen            | 29         | 2         |          |          | 59          | 4         | 52          | 3         | 36         | 2         | 35         | 2         | 211         | 13         |
| Pittwater RSL        | 49         | 3         |          |          | 113         | 6         | 59          | 3         | 22         | 1         | 35         | 2         | 278         | 15         |
| Seaford              | 47         | 3         |          |          | 124         | 7         | 61          | 3         | 19         | 1         | 37         | 2         | 288         | 16         |
| St Augustines        | 107        | 6         |          |          | 58          | 3         |             |           |            |           | 37         | 2         | 202         | 11         |
| Wakehurst            | 42         | 3         |          |          | 86          | 5         | 102         | 5         |            |           | 35         | 2         | 265         | 15         |
| <b>Total Players</b> | <b>643</b> |           | <b>0</b> |          | <b>1682</b> |           | <b>1193</b> |           | <b>389</b> |           | <b>351</b> |           | <b>4258</b> |            |
| <b>Total Teams</b>   |            | <b>40</b> |          | <b>0</b> |             | <b>95</b> |             | <b>63</b> |            | <b>20</b> |            | <b>20</b> |             | <b>238</b> |

Total number of Senior Players (U18-All Age)  
registered per club in 2017



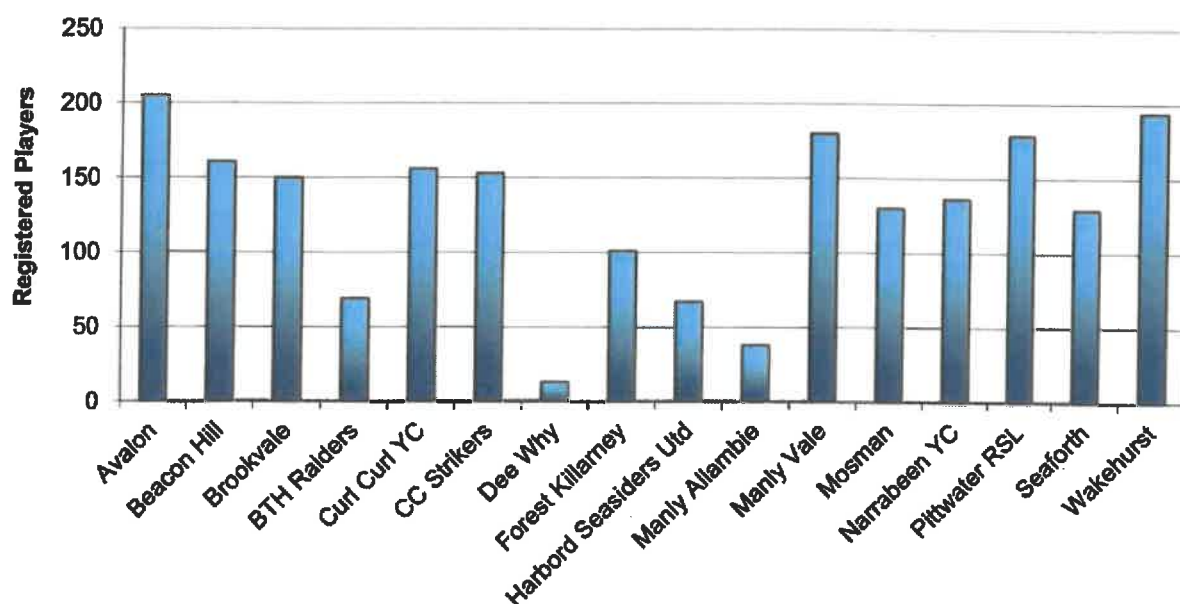


## REGISTRARS' REPORT

### Junior Women

| Club                 | W-U10      |           | W-U11      |           | W-U12      |           | W-U13      |           | W-U14      |           | W-U15      |           | W-U16      |           | Total       |            |
|----------------------|------------|-----------|------------|-----------|------------|-----------|------------|-----------|------------|-----------|------------|-----------|------------|-----------|-------------|------------|
|                      | P          | T         | P          | T         | P          | T         | P          | T         | P          | T         | P          | T         | P          | T         | P           | T          |
| Avalon               | 24         | 2         | 36         | 3         | 24         | 2         | 29         | 2         | 27         | 2         | 36         | 3         | 29         | 2         | 205         | 16         |
| Beacon Hill          | 24         | 2         | 23         | 2         | 26         | 2         | 30         | 2         | 13         | 1         | 15         | 1         | 30         | 2         | 161         | 12         |
| Brookvale            | 13         | 1         | 36         | 3         | 31         | 2         | 41         | 3         |            |           | 15         | 1         | 14         | 1         | 150         | 11         |
| BTH Raiders          | 9          | 1         | 11         | 1         |            |           | 20         | 2         |            |           | 15         | 1         | 14         | 1         | 69          | 6          |
| Curl Curl YC         | 24         | 2         | 23         | 2         | 32         | 2         | 30         | 2         | 16         | 1         | 15         | 1         | 16         | 1         | 156         | 11         |
| CC Strikers          | 26         | 2         | 31         | 3         | 27         | 2         | 27         | 2         | 14         | 1         | 15         | 1         | 13         | 1         | 153         | 12         |
| Dee Why              |            |           | 13         | 1         |            |           |            |           |            |           |            |           |            |           | 13          | 1          |
| Forest Killarney     | 26         | 2         | 13         | 1         | 15         | 1         | 14         | 1         | 15         | 1         |            |           | 18         | 1         | 101         | 7          |
| Harbors Seaside Utd  | 23         | 2         | 12         | 1         |            |           | 16         | 1         |            |           | 16         | 1         |            |           | 67          | 5          |
| Manly Allambie       |            |           | 24         | 2         | 14         | 1         |            |           |            |           |            |           |            |           | 38          | 3          |
| Manly Vale           | 26         | 2         | 18         | 2         | 27         | 2         | 25         | 2         | 41         | 3         |            |           | 43         | 3         | 180         | 14         |
| Mosman               | 13         | 1         | 36         | 3         | 14         | 1         | 43         | 3         | 10         | 1         |            |           | 14         | 1         | 130         | 10         |
| Narrabeen YC         | 11         | 1         | 25         | 2         | 26         | 2         | 15         | 1         | 29         | 2         |            |           | 30         | 2         | 136         | 10         |
| Pittwater RSL        | 21         | 2         | 35         | 3         | 26         | 2         | 14         | 1         | 32         | 2         | 23         | 2         | 28         | 2         | 179         | 14         |
| Seaforth             | 12         | 1         | 21         | 2         | 15         | 1         | 27         | 2         | 29         | 2         | 25         | 2         |            |           | 129         | 10         |
| Wakehurst            | 24         | 2         | 37         | 3         | 17         | 1         | 32         | 2         | 40         | 3         | 16         | 1         | 28         | 2         | 194         | 14         |
| <b>Total Players</b> | <b>276</b> |           | <b>394</b> |           | <b>294</b> |           | <b>363</b> |           | <b>266</b> |           | <b>191</b> |           | <b>277</b> |           | <b>2061</b> |            |
| <b>Total Teams</b>   |            | <b>23</b> |            | <b>34</b> |            | <b>21</b> |            | <b>26</b> |            | <b>19</b> |            | <b>14</b> |            | <b>19</b> |             | <b>156</b> |

**Total number of Junior Womens Players (W10-W16)  
registered per club in 2017**

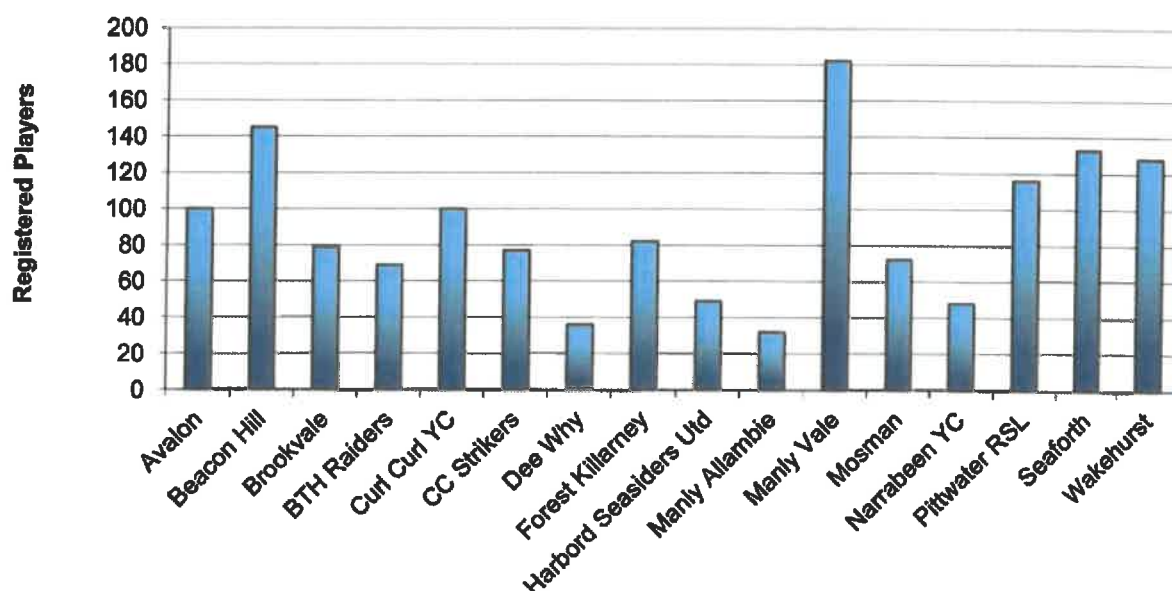


## REGISTRARS' REPORT

### Senior Women

| Club                 | W-U18      |           | W-AL       |           | W-O35      |           | W-PL       |          | Total       |           |
|----------------------|------------|-----------|------------|-----------|------------|-----------|------------|----------|-------------|-----------|
|                      | P          | T         | P          | T         | P          | T         | P          | T        | P           | T         |
| Avalon               | 33         | 2         | 51         | 3         |            |           | 16         | 1        | 100         | 6         |
| Beacon Hill          | 26         | 2         | 68         | 4         | 36         | 2         | 15         | 1        | 145         | 9         |
| Brookvale            | 15         | 1         | 32         | 2         | 18         | 1         | 14         | 1        | 79          | 5         |
| BTH Raiders          | 17         | 1         | 19         | 1         | 33         | 2         |            |          | 69          | 4         |
| Curl Curl YC         | 16         | 1         | 50         | 3         | 34         | 2         |            |          | 100         | 6         |
| CC Strikers          | 14         | 1         | 63         | 4         |            |           |            |          | 77          | 5         |
| Dee Why              |            |           | 36         | 2         |            |           |            |          | 36          | 2         |
| Forest Killarney     | 13         | 1         | 36         | 2         | 18         | 1         | 15         | 1        | 82          | 5         |
| Harbors Seaside Utd  |            |           | 32         | 2         |            |           | 17         | 1        | 49          | 3         |
| Manly Allambie       |            |           | 18         | 1         | 14         | 1         |            |          | 32          | 2         |
| Manly Vale           | 30         | 2         | 65         | 4         | 71         | 4         | 16         | 1        | 182         | 11        |
| Mosman               |            |           | 53         | 3         | 19         | 1         |            |          | 72          | 4         |
| Narrabeen YC         |            |           | 16         | 1         | 32         | 2         |            |          | 48          | 3         |
| Pittwater RSL        | 29         | 2         | 53         | 3         | 34         | 2         |            |          | 116         | 7         |
| Seaforth             | 31         | 2         | 68         | 4         | 18         | 1         | 16         | 1        | 133         | 8         |
| Wakehurst            | 27         | 2         | 51         | 3         | 34         | 2         | 16         | 1        | 128         | 8         |
| <b>Total Players</b> | <b>251</b> |           | <b>711</b> |           | <b>361</b> |           | <b>125</b> |          | <b>1448</b> |           |
| <b>Total Teams</b>   |            | <b>17</b> |            | <b>42</b> |            | <b>21</b> |            | <b>8</b> |             | <b>88</b> |

**Total number of Senior Womens Players  
(W18-WAll Age) registered per club in 2017**



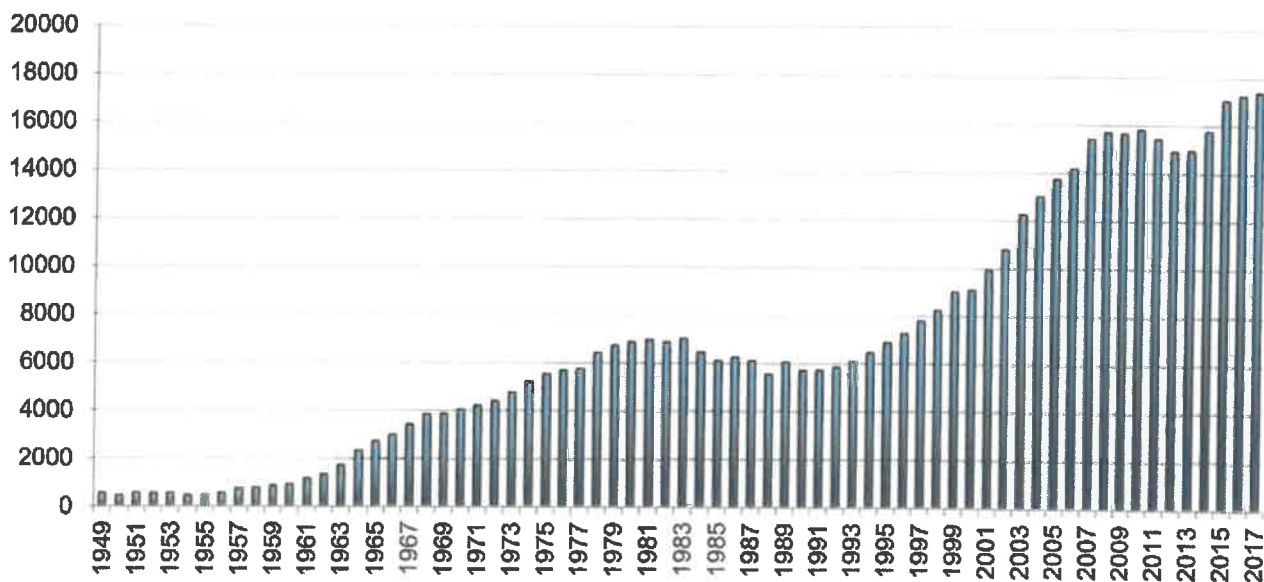
**Note: There were a total of 88 Dual Registered women playing in 2017.**

## MWFA GROWTH SINCE 1947

A comparison of the total number of players and teams since the formation of the MWFA is shown below.

| Year | Teams | Players | Year | Teams | Players | Year | Teams | Players |
|------|-------|---------|------|-------|---------|------|-------|---------|
| 1947 |       |         | 1948 |       |         | 1949 | 31    | 553     |
| 1950 | 31    | 446     | 1951 | 33    | 556     | 1952 | 30    | 536     |
| 1953 | 31    | 536     | 1954 | 26    | 428     | 1955 | 29    | 445     |
| 1956 | 35    | 550     | 1957 | 43    | 719     | 1958 | 51    | 764     |
| 1959 | 55    | 853     | 1960 | 62    | 911     | 1961 | 79    | 1147    |
| 1962 | 100   | 1328    | 1963 | 135   | 1708    | 1964 | 168   | 2314    |
| 1965 | 201   | 2708    | 1966 | 231   | 2977    | 1967 | 257   | 3412    |
| 1968 | 282   | 3826    | 1969 | 285   | 3855    | 1970 | 289   | 4025    |
| 1971 | 315   | 4203    | 1972 | 331   | 4386    | 1973 | 351   | 4745    |
| 1974 | 381   | 5174    | 1975 | 405   | 5523    | 1976 | 446   | 5656    |
| 1977 | 486   | 5735    | 1978 | 541   | 6399    | 1979 | 572   | 6714    |
| 1980 | 587   | 6856    | 1981 | 580   | 6941    | 1982 | 564   | 6851    |
| 1983 | 569   | 7013    | 1984 | 564   | 6439    | 1985 | 637   | 6089    |
| 1986 | 548   | 6238    | 1987 | 530   | 6081    | 1988 | 532   | 5531    |
| 1989 | 521   | 6035    | 1990 | 491   | 5694    | 1991 | 496   | 5712    |
| 1992 | 509   | 5830    | 1993 | 520   | 6082    | 1994 | 557   | 6430    |
| 1995 | 580   | 6850    | 1996 | 610*  | 7233    | 1997 | 633   | 7778    |
| 1998 | 684   | 8221    | 1999 | 731   | 8988    | 2000 | 762   | 9071    |
| 2001 | 803   | 9905    | 2002 | 874   | 10774   | 2003 | 872   | 12236   |
| 2004 | 1029  | 12989   | 2005 | 1053  | 13733   | 2006 | 1115  | 14167   |
| 2007 | 1190  | 15398   | 2008 | 1246  | 15689   | 2009 | 1191  | 15642   |
| 2010 | 1150  | 15814   | 2011 | 1124  | 15427   | 2012 | 1086  | 14917   |
| 2013 | 1111  | 14948   | 2014 | 1173  | 15757   | 2015 | 1281  | 17057   |
| 2016 | 1300  | 17240   | 2017 | 1315  | 17383   |      |       |         |

### Registered Players in the MWFA since 1947





# Registrations Numbers since the Formation of the Manly Warringah Football Association

| Year | 6 | 7   | 8   | 9   | 10  | 11  | 12  | 13  | 14  | 15  | 16  | 17  | 18 | 19 | 21 | PL | AL  | O35 | O45 | W10 | W11 | W12 | W13 | W14 | W15 | W16 | W17 | W18 | WPL | WAL | WO35 | Total |
|------|---|-----|-----|-----|-----|-----|-----|-----|-----|-----|-----|-----|----|----|----|----|-----|-----|-----|-----|-----|-----|-----|-----|-----|-----|-----|-----|-----|-----|------|-------|
| 1947 |   |     |     |     |     |     |     |     |     |     |     |     |    |    |    |    |     |     |     |     |     |     |     |     |     |     |     |     |     |     | 0    |       |
| 1948 |   |     |     |     |     |     |     |     |     |     |     |     |    |    |    |    |     |     |     |     |     |     |     |     |     |     |     |     |     |     | 0    |       |
| 1949 |   |     |     |     |     |     |     |     |     |     |     |     |    |    |    |    |     |     |     |     |     |     |     |     |     |     |     |     |     |     |      |       |
| 1950 |   |     |     |     |     | 125 |     |     |     | 89  | 89  |     |    |    |    |    | 143 |     |     |     |     |     |     |     |     |     |     |     |     |     | 553  |       |
| 1951 |   |     |     |     |     | 104 |     |     | 104 | 122 | 122 | 104 |    |    |    |    | 122 |     |     |     |     |     |     |     |     |     |     |     |     |     | 446  |       |
| 1952 |   |     |     |     |     | 125 |     |     | 89  | 89  | 89  | 72  |    |    |    |    | 161 |     |     |     |     |     |     |     |     |     |     |     |     |     | 556  |       |
| 1953 |   |     |     |     |     |     |     |     |     |     |     |     |    |    |    |    |     |     |     |     |     |     |     |     |     |     |     |     |     |     | 536  |       |
| 1954 |   |     |     |     |     |     |     |     |     |     |     |     |    |    |    |    |     |     |     |     |     |     |     |     |     |     |     |     |     |     | 536  |       |
| 1955 |   |     |     |     | 59  | 60  |     | 61  | 83  | 83  |     |     |    |    |    |    | 182 |     |     |     |     |     |     |     |     |     |     |     |     |     | 428  |       |
| 1956 |   |     |     |     |     |     |     |     |     |     |     |     |    |    |    |    |     |     |     |     |     |     |     |     |     |     |     |     |     |     | 445  |       |
| 1957 |   |     |     |     |     |     |     |     |     |     |     |     |    |    |    |    |     |     |     |     |     |     |     |     |     |     |     |     |     |     | 550  |       |
| 1958 |   |     |     |     | 163 | 164 |     | 128 | 81  | 81  |     |     |    |    |    |    | 228 |     |     |     |     |     |     |     |     |     |     |     |     |     | 719  |       |
| 1959 |   |     |     |     | 174 | 208 |     | 126 | 88  | 88  |     |     |    |    |    |    | 257 |     |     |     |     |     |     |     |     |     |     |     |     |     | 764  |       |
| 1960 |   |     | 123 |     | 156 | 193 |     | 171 | 80  | 80  |     |     |    |    |    |    | 188 |     |     |     |     |     |     |     |     |     |     |     |     |     | 853  |       |
| 1961 |   |     | 169 |     | 228 | 230 |     | 215 | 79  | 79  |     |     |    |    |    |    | 228 |     |     |     |     |     |     |     |     |     |     |     |     |     | 911  |       |
| 1962 |   |     | 241 |     | 315 | 251 |     | 214 |     |     | 145 |     |    |    |    |    | 162 |     |     |     |     |     |     |     |     |     |     |     |     |     | 1147 |       |
| 1963 |   |     | 399 | 207 | 215 | 174 | 185 | 130 | 98  | 102 | 57  |     |    |    |    |    | 141 |     |     |     |     |     |     |     |     |     |     |     |     |     | 1328 |       |
| 1964 |   | 265 | 292 | 287 | 258 | 283 | 213 | 137 | 135 | 174 | 42  |     |    |    |    |    | 228 |     |     |     |     |     |     |     |     |     |     |     |     |     | 1708 |       |
| 1965 |   | 354 | 327 | 371 | 307 | 248 | 93  | 196 | 144 | 87  |     |     |    |    |    |    | 381 |     |     |     |     |     |     |     |     |     |     |     |     |     | 2314 |       |
| 1966 |   | 338 | 391 | 380 | 349 | 345 | 248 | 255 | 183 | 134 |     |     |    |    |    |    | 354 |     |     |     |     |     |     |     |     |     |     |     |     |     | 2708 |       |
| 1967 |   | 389 | 382 | 451 | 429 | 369 | 313 | 235 | 238 | 150 |     |     |    |    |    |    | 456 |     |     |     |     |     |     |     |     |     |     |     |     |     | 2977 |       |
| 1968 |   | 433 | 430 | 413 | 479 | 434 | 341 | 284 | 217 | 157 |     |     |    |    |    |    | 638 |     |     |     |     |     |     |     |     |     |     |     |     |     | 3412 |       |
| 1969 |   | 427 | 401 | 470 | 416 | 422 | 377 | 304 | 195 | 149 |     |     |    |    |    |    | 694 |     |     |     |     |     |     |     |     |     |     |     |     |     | 3826 |       |
| 1970 |   | 387 | 503 | 438 | 485 | 366 | 389 | 288 | 277 | 136 |     |     |    |    |    |    | 776 |     |     |     |     |     |     |     |     |     |     |     |     |     | 3855 |       |
| 1971 |   | 475 | 468 | 538 | 481 | 458 | 359 | 364 | 260 | 220 |     |     |    |    |    |    | 580 |     |     |     |     |     |     |     |     |     |     |     |     |     | 4025 |       |
| 1972 |   | 486 | 449 | 498 | 529 | 440 | 378 | 298 | 338 | 256 |     |     |    |    |    |    | 714 |     |     |     |     |     |     |     |     |     |     |     |     |     | 4203 |       |
|      |   |     |     |     |     |     |     |     |     |     |     |     |    |    |    |    |     |     |     |     |     |     |     |     |     |     |     |     |     |     | 4386 |       |

| Year | 6   | 7   | 8   | 9   | 10  | 11  | 12  | 13  | 14  | 15  | 16  | 17  | 18  | 19  | 21 | PL  | AL   | O35 | O45 | W10 | W11 | W12 | W13 | W14 | W15 | W16 | W17 | W18 | WPL | WAL | WO35 | Total |
|------|-----|-----|-----|-----|-----|-----|-----|-----|-----|-----|-----|-----|-----|-----|----|-----|------|-----|-----|-----|-----|-----|-----|-----|-----|-----|-----|-----|-----|-----|------|-------|
| 1973 |     | 421 | 481 | 528 | 529 | 496 | 435 | 376 | 230 | 284 |     | 239 |     |     |    |     | 726  |     |     |     |     |     |     |     |     |     |     |     |     |     |      | 4745  |
| 1974 |     | 458 | 483 | 530 | 527 | 520 | 530 | 373 | 343 | 200 | 192 |     | 196 |     |    |     | 822  |     |     |     |     |     |     |     |     |     |     |     |     |     |      | 5174  |
| 1975 |     | 474 | 502 | 521 | 552 | 504 | 486 | 444 | 319 | 342 | 175 |     | 230 |     |    |     | 974  |     |     |     |     |     |     |     |     |     |     |     |     |     |      | 5523  |
| 1976 |     | 500 | 542 | 524 | 502 | 515 | 483 | 429 | 366 | 293 | 248 |     | 231 |     |    | 348 | 675  |     |     |     |     |     |     |     |     |     |     |     |     |     |      | 5656  |
| 1977 |     | 602 | 548 | 550 | 530 | 469 | 469 | 412 | 296 | 295 | 219 |     | 329 |     |    | 296 | 720  |     |     |     |     |     |     |     |     |     |     |     |     |     |      | 5735  |
| 1978 |     | 676 | 688 | 645 | 567 | 503 | 455 | 413 | 334 | 259 | 274 |     | 319 |     |    | 317 | 949  |     |     |     |     |     |     |     |     |     |     |     |     |     |      | 6399  |
| 1979 |     | 689 | 753 | 742 | 674 | 560 | 453 | 389 | 305 | 277 | 171 |     | 321 |     |    | 365 | 1015 |     |     |     |     |     |     |     |     |     |     |     |     |     |      | 6714  |
| 1980 |     | 672 | 766 | 780 | 680 | 586 | 501 | 404 | 315 | 226 | 207 |     | 265 |     |    | 375 | 1079 |     |     |     |     |     |     |     |     |     |     |     |     |     |      | 6856  |
| 1981 |     | 565 | 764 | 760 | 723 | 618 | 496 | 417 | 298 | 273 | 176 |     | 209 |     |    | 369 | 1273 |     |     |     |     |     |     |     |     |     |     |     |     |     |      | 6941  |
| 1982 |     | 537 | 642 | 757 | 718 | 624 | 548 | 387 | 339 | 240 | 171 |     | 180 |     |    | 378 | 1330 |     |     |     |     |     |     |     |     |     |     |     |     |     |      | 6851  |
| 1983 |     | 519 | 605 | 699 | 651 | 616 | 575 | 442 | 317 | 307 | 179 |     | 190 |     |    | 384 | 1529 |     |     |     |     |     |     |     |     |     |     |     |     |     |      | 7013  |
| 1984 |     | 469 | 599 | 573 | 641 | 527 | 480 | 391 | 343 | 273 | 196 |     |     | 298 |    | 377 | 1272 |     |     |     |     |     |     |     |     |     |     |     |     |     |      | 6439  |
| 1985 |     | 512 | 545 | 606 | 563 | 495 | 454 | 323 | 322 | 307 |     | 284 |     | 120 |    | 385 | 1173 |     |     |     |     |     |     |     |     |     |     |     |     |     |      | 6089  |
| 1986 |     | 478 | 585 | 533 | 487 | 513 | 405 | 340 | 285 | 221 | 185 |     | 219 |     |    | 393 | 1264 |     |     |     |     | 87  |     | 65  |     |     |     |     |     | 188 |      | 6238  |
| 1987 |     | 547 | 547 | 576 | 574 | 409 | 421 | 323 | 220 | 272 | 138 |     | 201 |     |    | 396 | 1237 |     |     |     |     |     | 87  |     |     |     |     |     |     | 143 |      | 6081  |
| 1988 |     | 556 | 545 | 527 | 479 | 404 | 299 | 257 | 246 | 119 | 183 |     | 202 |     |    | 391 | 1119 |     |     |     |     |     |     | 82  |     |     |     |     |     | 122 |      | 5531  |
| 1989 | 605 | 620 | 583 | 548 | 434 | 378 | 344 | 205 | 206 | 176 | 145 |     | 164 |     |    | 401 | 1103 |     |     |     |     |     |     |     |     |     |     |     |     | 125 |      | 6035  |
| 1990 | 571 | 609 | 535 | 516 | 459 | 321 | 275 | 224 | 131 | 178 | 116 |     | 186 |     |    | 395 | 1001 |     |     |     |     |     |     |     |     |     |     |     |     | 177 |      | 5694  |
| 1991 | 645 | 602 | 599 | 491 | 440 | 382 | 254 | 159 | 190 | 74  | 158 |     | 145 |     |    | 394 | 1083 |     |     |     |     |     |     |     |     |     |     |     |     | 96  |      | 5712  |
| 1992 | 670 | 567 | 598 | 541 | 397 | 366 | 267 | 177 | 132 | 157 | 94  |     | 127 |     |    | 379 | 1202 |     |     |     |     |     |     |     |     |     |     |     |     |     |      | 5830  |
| 1993 | 735 | 624 | 578 | 545 | 449 | 368 | 324 | 199 | 137 | 127 | 144 |     | 116 |     |    | 412 | 1133 |     |     |     |     |     |     |     |     |     |     |     |     | 156 |      | 6082  |
| 1994 | 765 | 705 | 623 | 584 | 469 | 403 | 296 | 219 | 223 | 133 | 112 |     | 185 |     |    | 379 | 1124 |     |     |     |     |     |     |     |     |     |     |     |     | 230 |      | 6430  |
| 1995 | 548 | 684 | 656 | 590 | 515 | 436 | 352 | 282 | 184 | 199 | 150 |     | 193 |     |    | 470 | 1304 |     |     |     |     |     |     |     |     | 108 |     |     |     | 229 |      | 6850  |
| 1996 | 616 | 654 | 704 | 554 | 475 | 451 | 348 | 263 | 164 | 196 | 204 |     | 172 |     |    | 411 | 1334 |     |     |     |     |     | 85  |     |     |     |     |     |     | 265 |      | 7233  |
| 1997 | 642 | 787 | 731 | 675 | 545 | 423 | 383 | 236 | 256 | 191 | 149 |     | 217 |     |    | 410 | 1331 |     |     |     |     |     | 171 |     |     |     |     |     |     | 341 |      | 7778  |
| 1998 | 734 | 832 | 848 | 687 | 604 | 456 | 333 | 316 | 226 | 253 | 210 |     | 252 |     |    | 393 | 1305 |     |     |     |     |     | 203 |     |     |     |     |     |     | 401 |      | 8221  |
| 1999 | 781 | 962 | 881 | 805 | 611 | 523 | 451 | 295 | 276 | 229 | 219 |     | 193 |     |    | 430 | 1426 |     |     |     |     |     | 251 |     |     |     |     |     |     | 467 |      | 8988  |